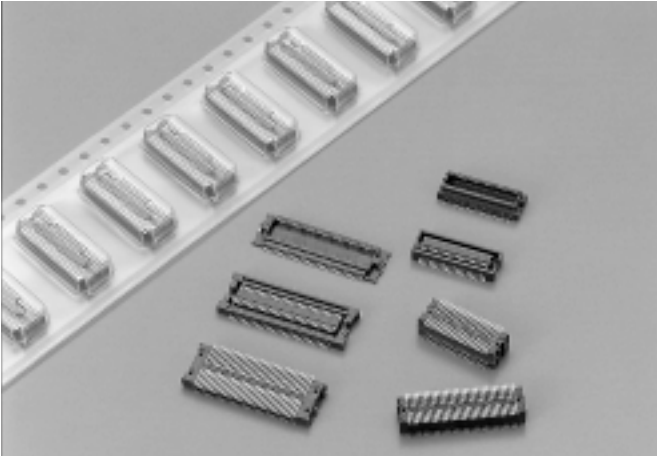


Fine Pitch SMT Board to Board Connectors

Series 5087



Series 5087 is the board to board, fine pitch connector which meets the requirement for high density circuitry in the market and designed especially for portable equipment. Mated height between boards can be 2.0mm or 2.5mm.

FEATURES

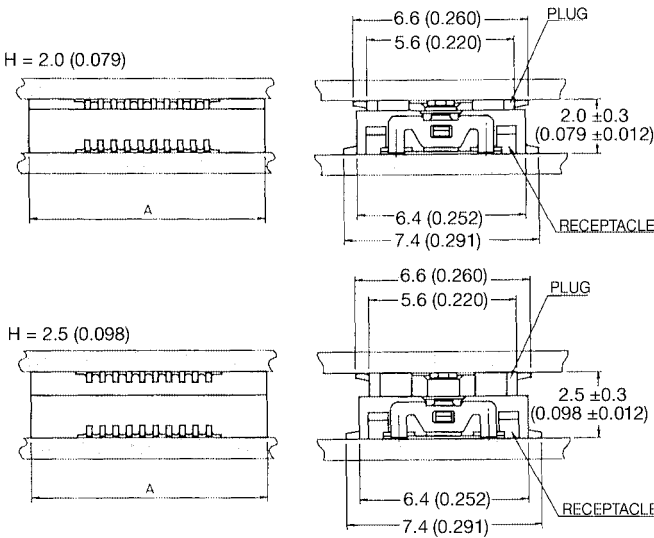
5087 series is offered with strain relief, with or without vacuum tape.

Designed to have the strong resistance against torque forces on mating area to achieve the high reliability in the natural fall shock environment.

Parts are supplied in tape and reel with 1000 pieces per reel. Contact sales office for details of other available pin counts.

SPECIFICATIONS

Series	5087
Mated Height	2.0, 2.5mm
Pitch	0.5mm
Current	0.4A Max
Voltage	50V Max
D.W. Voltage	500V rms/min
Mating Cycles	30



No. of Pos.	Dimension A
010	6.4 (0.252)
030	11.4 (0.449)
050	16.4 (0.646)
060	18.9 (0.744)

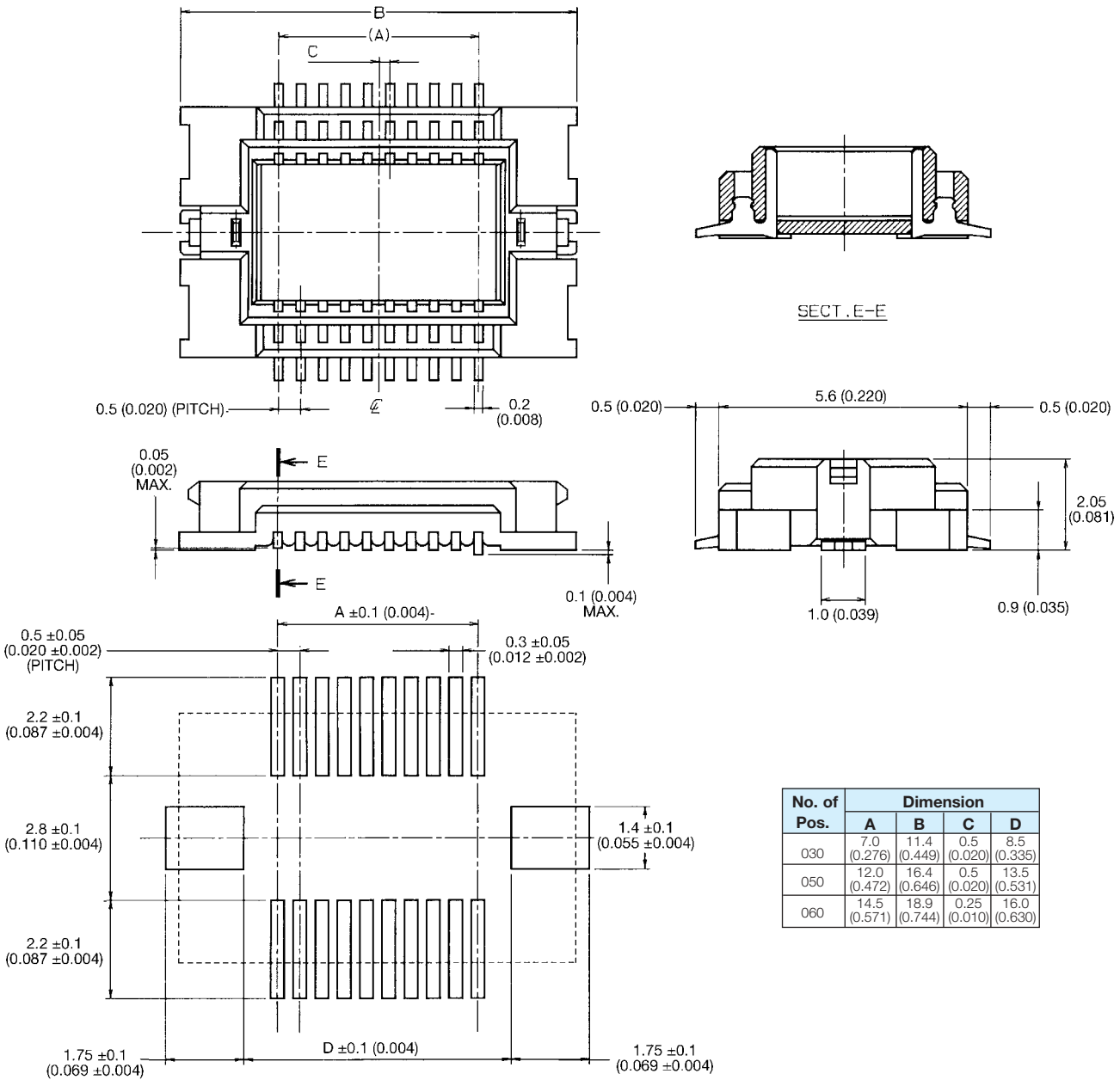
Series	Variation	Mated Height	Gold Plating	Strain Relief	Vacuum Cover	Part Number		Number of Positions							
								010	020	030	040	050	060	080	140
5087	Plug	2.0mm	0.1µm	O	O	14 5087	XXX 9 20 829	O		O		O	O		
				O	1	14 5087	XXX 0 20 829	O				O	O		
		2.5mm	0.1µm	O	O	14 5087	XXX 9 25 829			O		O	O		
				O	1	14 5087	XXX 0 25 829			O		O	O		
	Receptacle		0.1µm	O	O	24 5087	XXX 9 07 829	O		O		O	O		
				O	1	24 5087	XXX 0 07 829	O		O		O	O		

O = Available
1 = Not available

Fine Pitch SMT Board to Board Connectors

Series 5087

Plug for Mated Height with Receptacle of 2.5mm



RECOMMENDED P.C. BOARD LAYOUT

No. of Pos.	Dimension			
	A	B	C	D
030	7.0 (0.276)	11.4 (0.449)	0.5 (0.020)	8.5 (0.335)
050	12.0 (0.472)	16.4 (0.646)	0.5 (0.020)	13.5 (0.531)
060	14.5 (0.571)	18.9 (0.744)	0.25 (0.010)	16.0 (0.630)

HOW TO ORDER

14	5087	XXX	X25	829
Prefix	Series Number	Number of Positions 030 050 060	Variation Code 9 = With strain relief, with vacuum cover 0 = With strain relief, without vacuum cover	Finish Code

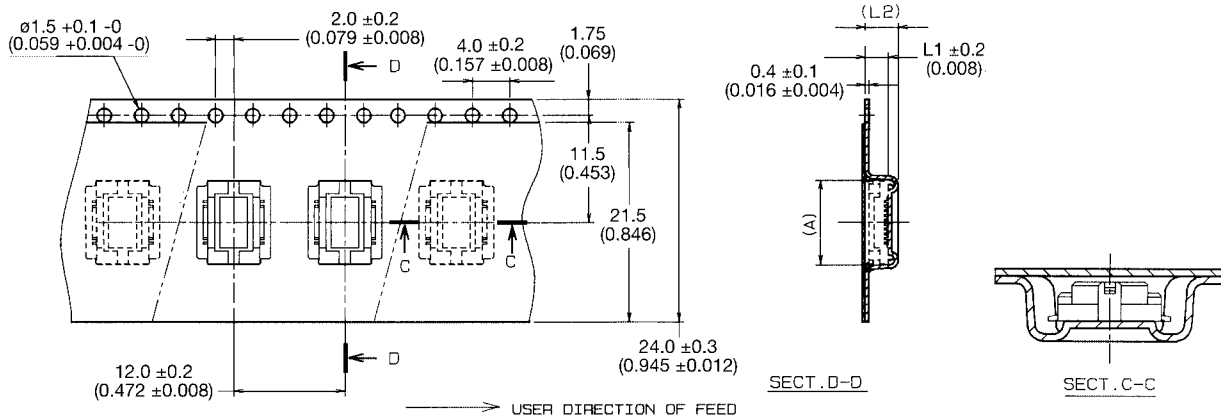
Parts are supplied in tape and reel packaging
with 1000 pieces per reel.

Fine Pitch SMT Board to Board Connectors

Series 5087 Plug Tape and Reel Package H=2.0 - 2.5mm



20 - 50 Contacts



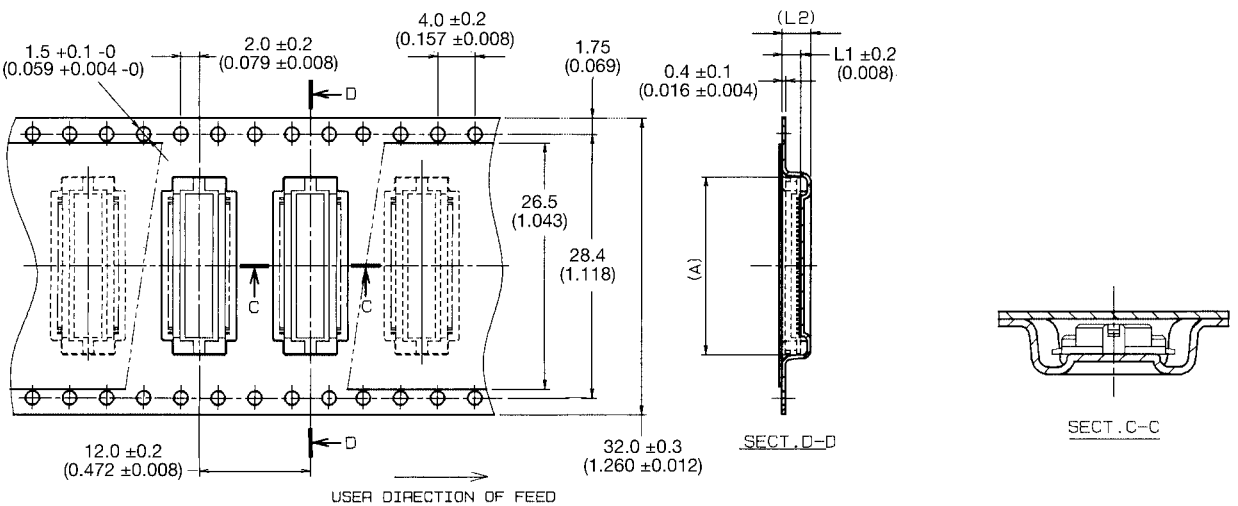
H=2.0 (0.079)

Dimension				
P/N	No. of Pos.	A	L1	L2
14 5087 010 X20 829	010	6.6 (0.260)	2.0 (0.079)	3.1 (0.122)
↕ 030 ↕	030	11.6 (0.457)	2.0 (0.079)	3.1 (0.122)
14 5087 050 X20 829	050	16.6 (0.654)	2.0 (0.079)	3.1 (0.122)

H=2.5 (0.098)

Dimension				
P/N	No. of Pos.	A	L1	L2
14 5087 030 X25 829	030	11.6 (0.457)	2.5 (0.100)	3.6 (0.142)
14 5087 050 X25 829	050	16.6 (0.654)	2.5 (0.100)	3.6 (0.142)

60 Contacts



H=2.0 (0.079)

Dimension				
P/N	No. of Pos.	A	L1	L2
14 5087 060 X20 829	060	19.1 (0.752)	2.0 (0.079)	3.1 (0.122)

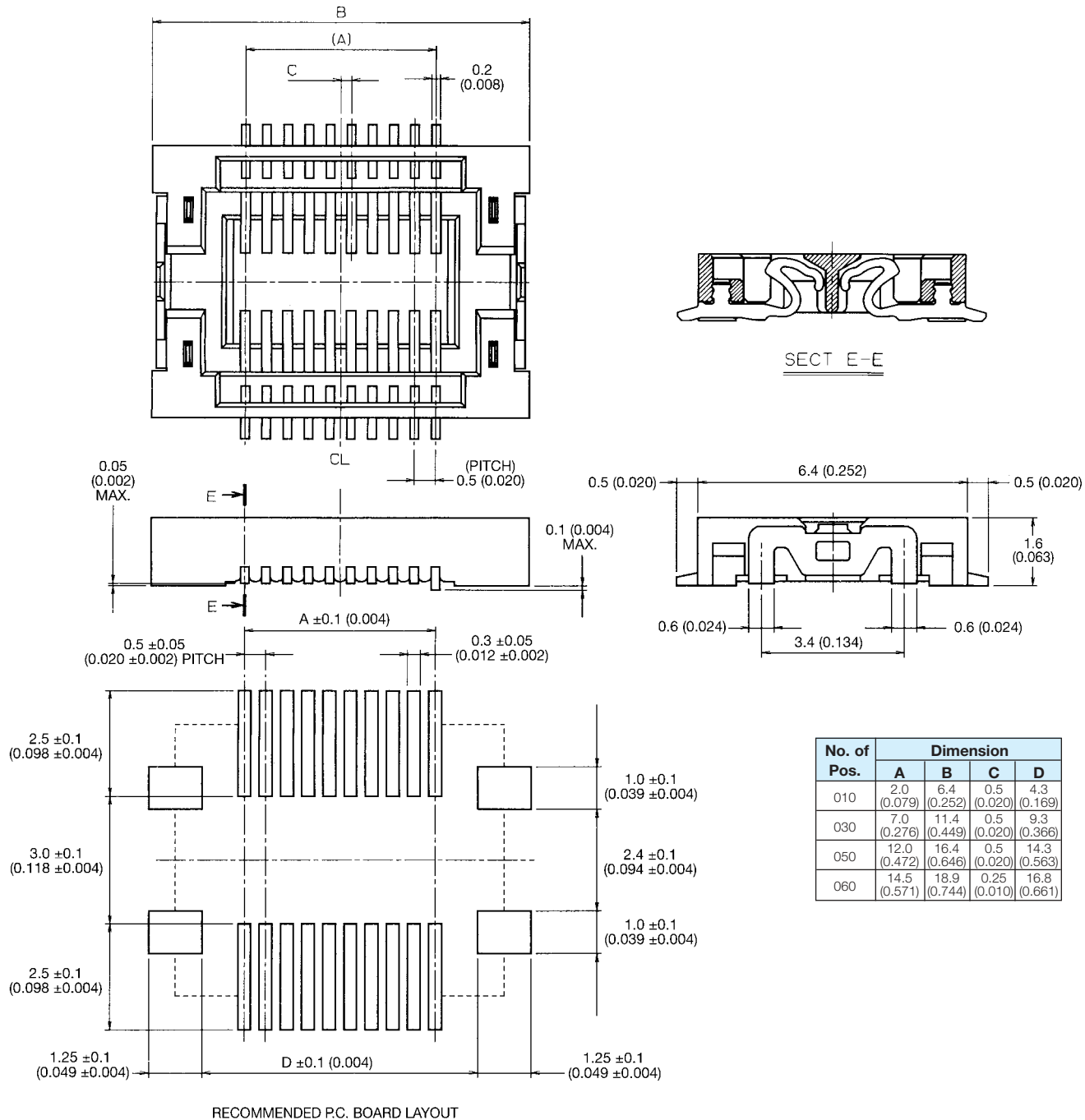
H=2.5 (0.098)

Dimension				
P/N	No. of Pos.	A	L1	L2
14 5087 060 X25 829	060	19.1 (0.752)	2.5 (0.098)	3.6 (0.142)

Fine Pitch SMT Board to Board Connectors

Series 5087

Receptacle for Mated Height with Plug of 2.0 or 2.5mm



RECOMMENDED P.C. BOARD LAYOUT

HOW TO ORDER

24

Prefix

5087

Series Number

XXX

Number of Positions

010
030
050
060

X07

Variation Code

9 = With strain relief,
with vacuum cover
0 = With strain relief,
without vacuum cover

829

Finish Code

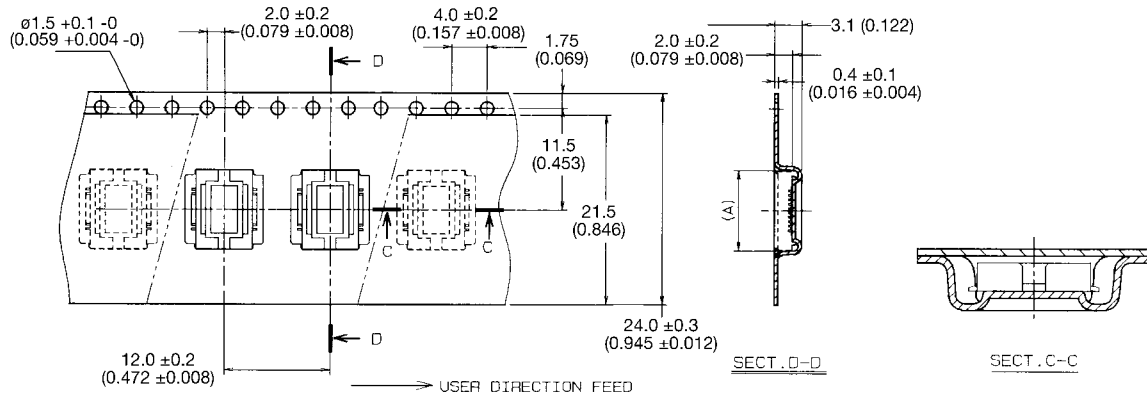
Parts are supplied in tape and reel packaging
with 1000 pieces per reel.

Fine Pitch SMT Board to Board Connectors

Series 5087 Receptacle Tape and Reel Package

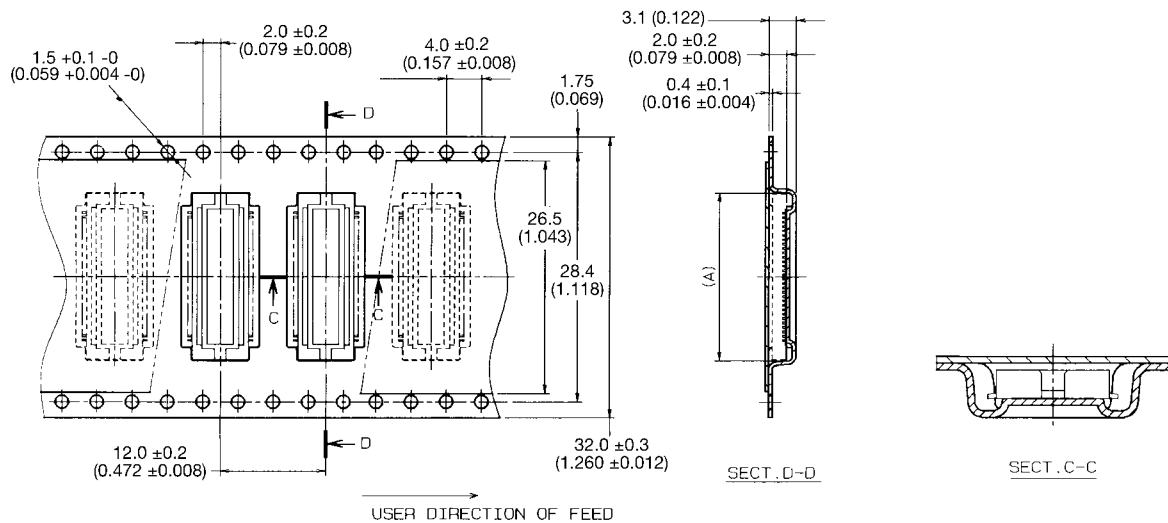
H=2.0 - 2.5mm

10 - 50 Contacts



Dimension		
P/N	No. of Pos.	A
24 5087 010 XXX 829	010	6.6 (0.260)
↕ 030 ↕	030	11.6 (0.457)
24 5087 050 XXX 829	050	16.6 (0.654)

60 Contacts



Dimension		
P/N	No. of Pos.	A
24 5087 060 XXX 829	060	19.1 (0.752)